

WAVEPACE® FTTH-WO-4F

Wall outlet for the FTTH subscriber connection at network level 5



10418993
FTTH-WO-4F-LC/APC



- Pre-assembled 4 port wall outlet for the fiber optic connection at the customer's premise (network level 5)
- Stable and appealing housing made of white polycarbonate
- Pre-assembled with 4 SC/APC or LC/APC ports and pigtails, according to the DIN color code and stored in the splice trays
- Hinged splice tray with molded splice protection holder for crimp and heat shrink
- Patch access secured with spring-loaded protection hood and marked with a laser warning label

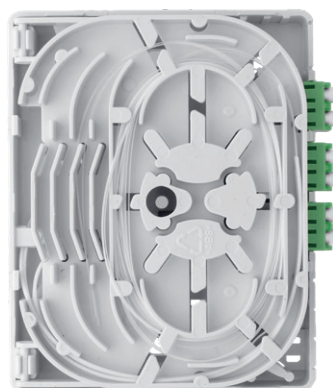
- Versatile cable entries for all installation cases, from all sides as well as from the rear
- Integrated cable strain relief via clamping segments for up to 5 mm diameter
- Integrated management for fibers and wires
- Cover with save locking and high dust protection level
- Integration option of reflector elements, also inline for remote service
- On request, the FTTH-WO-4F can be pre-assembled with the appropriate installation cable to avoid splicing at the customer's premise

Parameter	FTTH-WO-4F-empty	FTTH-WO-4F-SC/APC	FTTH-WO-4F-LC/APC	FTTH-WO-4F-SC/APC-XXm	FTTH-WO-4F-LC/APC-XXm	FTTH-WO-4F-SC/APC-P	FTTH-WO-4F-LC/APC-P
Application	-	Splice/Patch	Splice/Patch	Patch	Patch	Splice/Patch	Splice/Patch
Interface	-	4 x SC/APC-simplex adapters	2 x LC/APC-duplex adapters	4 x SC/APC-simplex adapters & pre-installed cable	2 x LC/APC-duplex adapters & pre-installed cable	4 x SC/APC-simplex adapters & pigtails	2 x LC/APC-duplex adapters & pigtails
Dimensions (L x W x D) [mm]	100 x 80 x 29						
Mounting options	Central wall installation with mounting hole spacing 78 mm, additional central hole						
Material	Plastic material ABS						
Color	Pure white RAL 9010						
Cable feed	Bottom area: 2 times from all sides, patch area: 2 times from the bottom-left hand side with cable feed to clamp						
Insertion loss IL [dB max.]	-	-	-	-	-	0,25	-
Return loss RL [dB min.]	-	-	-	-	-	60	-
Safety	Adapter with spring-loaded protection hood for dust and laser protection						
Special features	Can be configured with adapters and pigtails to your needs	-	-	In-house installation cable using G.657 fiber, cable lengths listed below	In-house installation cable using G.657 fiber at various cable lengths	-	-
Order No.	10418991	10418992	10418993	15 m: 10418960 30 m: 10418962 50 m: 10418964	cable lengths on request	on request	on request

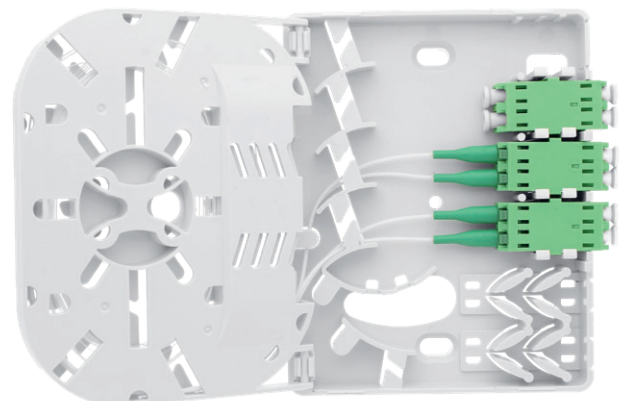
Configurations to meet the requirements of the subsidized German fiber optic rollout available:



Bottom area



Splice area



Patch area

braun teleCom
Quality on Line.

braun teleCom GmbH
Merkurstr. 3 c
30419 Hanover
Germany

Phone +49 511 757086
Fax +49 511 753169
info@brauntelecom.de
www.brauntelecom.com