

WAVEPACE® Fiber-Cabinet-P2MP

Splice splitter patch outdoor cabinet for point to multipoint networks

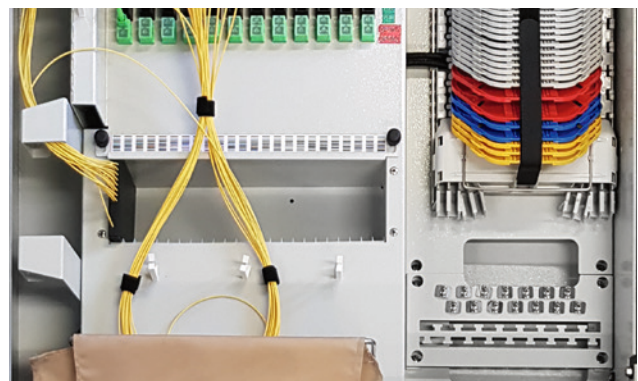
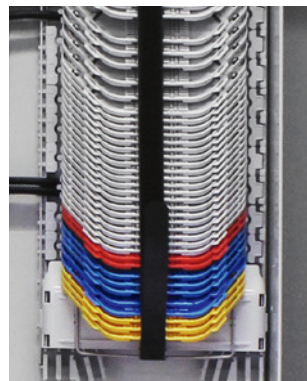
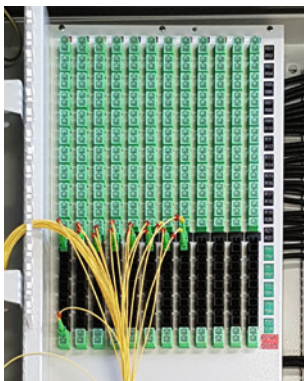


75700100
WAVEPACE® Fiber-Cabinet-P2MP



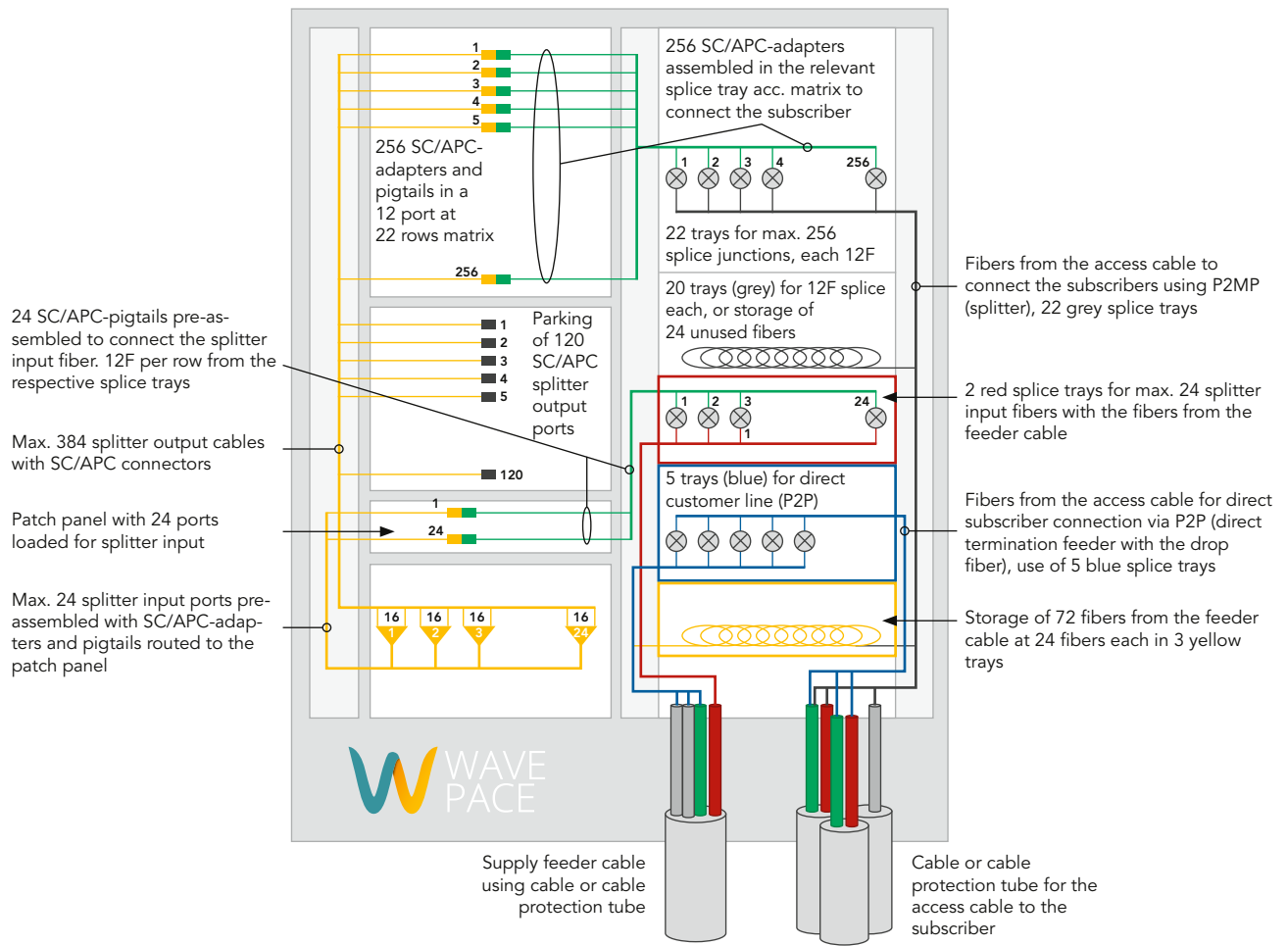
- Passive ready-to-connect outside plant cabinet for distribution of fiber optic connections via splitters to the subscriber at network level 3
- Robust, application-optimized cabinet made of powder-coated stainless steel
- Smallest cabinet dimensions, only 20 cm depth
- All housing elements can be individually replaced, without any impact to operation
- Mounting frame with hinged patch panel and splice block for easy access to the rear for service and maintenance purpose
- Pre-assembled with 256 SC/APC adapter and pigtails with G.657.A1 fibers in a 12 port horizontal at 22 vertical rows matrix
- Splitter mounting for 24 plug and play splitter modules, 1 splitter module SC/APC 1:16 pre-assembled in the basic configuration
- Parking area for up to 120 SC splitter output cables
- Functional slack storage bag
- Splice module with 90° foldable splice trays, each at max. capacity of 12 fibers for crimp or heat shrink splice protection
- Colored splice trays for different applications (e.g. splitter input connection by feeder cable connection at red tray)
- Integrated protection tube management for pigtail routing from patch to splicing area
- Transparent dust protection caps for identification by means of fiber optic red light source
- Cable feed for cable and protection tubes up to a diameter of 23 mm
- Logical port labeling and color coding, e.g. according to DIN color codes
- Loop function
- RFID tag identification in door handle possible on request

Parameter	Fiber-Cabinet-P2MP-256-SC/APC-Crimp	Fiber-Cabinet-P2MP-256-SC/APC-HS	Fiber-Cabinet-P2MP-256-SC/APC-HS-DIN	Fiber-Cabinet-P2MP-256-LC/APC-Crimp-DIN
Application	Splice/Splitter/Patch	Splice/Splitter/Patch	Splice/Splitter/Patch	Splice/Splitter/Patch
Interface	256 x SC/APC adapters & pigtails		256 x SC/APC adapters & pigtails, pre-assembled acc. to DIN IEC 60304 color code	128 x LC/APC duplex adapters & 256 pigtails, pre-assembled acc. to DIN IEC 60304 color code
Splice capacity	52 splice trays for each 12 x crimp	52 splice trays for each 12 x heat shrink		52 splice trays for each 12 x crimp
Dimensions (H x W x D) [mm]	1.100 x 700 x 200			
Weight [kg]	70			
Protection class	IP55/IK10			
Material	Stainless steel, powder-coated			
Color	Light grey, RAL 7035			
Mounting options	Plinth and duct system			
Cable feed	Bottom			
Number of in- and outlets	Feeder: 6 x up to Ø 23 mm and loop with Ø 23 mm / Access: up to 60 x Ø 13 mm			
Door aperture angle	110°/removable			
Pivot angle mounting frame	45°			
Angle of hinged splice tray	90°			
Lock system	Pivoting lever with lock, RFID tag identification optional			
Order No.	75700100	75700105	75700103	75700102



Functional Layout (schematic diagram)

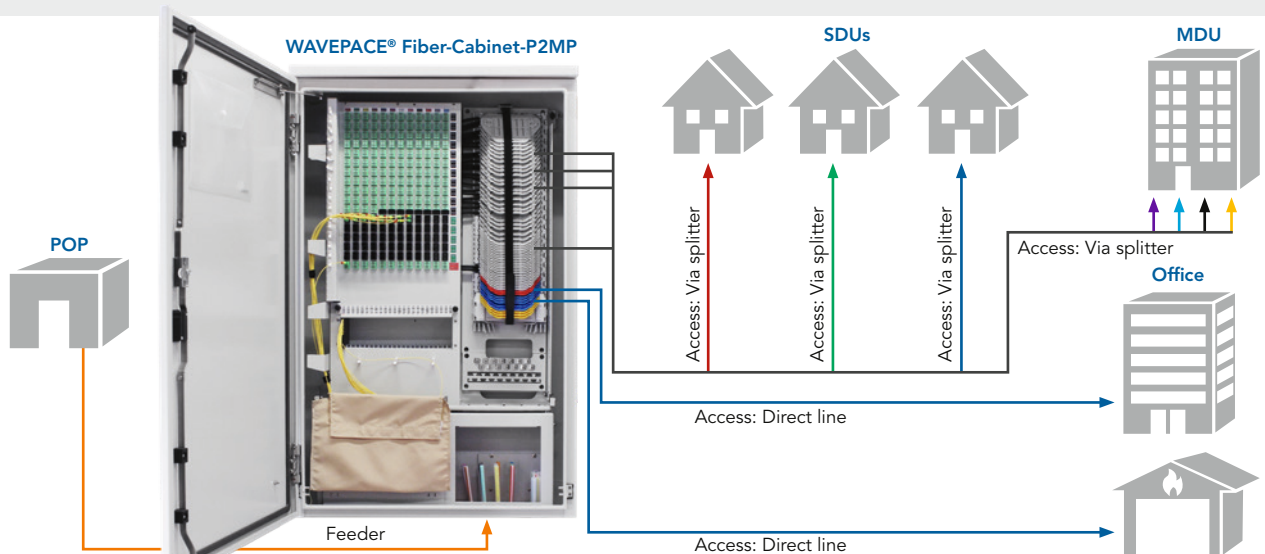
Setup of the WAVEPACE® Fiber-Cabinet-P2MP with application overview of the individual components



Application example

An appropriate feeder cable is blown in from the PoP to the WAVEPACE® Fiber-Cabinet-P2MP. At the cabinet, the feeder cable gets spliced to splitter input and not used fiber are being stored. Through splicing, the subscribers get connected to the splitter output fiber. The service activation will be carried out by patching the splitter output connector from

the parking area to the corresponding subscriber port. Customers, who need a dedicated line (e.g. for security reasons), will be directly connected with the fibers from the PoP in the blue splice trays, and the service will be provided accordingly.



WAVEPACE® Fiber-Cabinet-P2MP

Accessories for the splice splitter patch outdoor cabinet

77700902
Concrete-Base-Fiber-Cabinet



Replacement base plate
available on request



Lightweight concrete base for WAVEPACE® Fiber Cabinet

- Modular lightweight concrete base for quick assembly with removable inspection panel on the front for use with the WAVEPACE® Fiber Cabinet
- The low weight of the individual components facilitates simple assembly
- Smallest housing dimensions, only 20 cm installation depth
- Height from ground level approx. 300 mm
- Designed for a housing with mounting dimensions 635 x 103 mm
- Very space-saving delivery of the dismantled base on one-way pallet

Parameter	Concrete-Plinth-Fiber-Cabinet
Application	Ground plinth for Fiber Cabinet
Total dimensions (H x W x D) [mm]	1.000 x 700 x 200
Dimensions base plate (H x W x D) [mm]	55 x 880 x 350
Weight [kg]	190
Material	Lightweight concrete, concrete quality min. LC 25/28 D1,8
Order No.	77700902

Further accessories

Item	Description	Order No.
Splitter-Module 1:8-SC/APC	PLC-Splitter box, type SC/APC 1:8 for Fiber-Cabinet-P2MP	on request
Splitter-Module 1:16-SC/APC	PLC-Splitter box, type SC/APC 1:16 for Fiber-Cabinet-P2MP	75700110
Splitter-Module 1:16-LC/APC	PLC-Splitter box, type LC/APC 1:16 for Fiber-Cabinet-P2MP	75700112
Splitter-Module 1:32-SC/APC	PLC-Splitter box, type SC/APC 1:32 for Fiber-Cabinet-P2MP, the cabinet housing must be adapted for this splitter module	75700114
Splitter-Module 1:32-LC/APC	PLC-Splitter box, type LC/APC 1:32 for Fiber-Cabinet-P2MP, the cabinet housing must be adapted for this splitter module	75700116
Fiber-Cabinet-Base	Metal base with removable inspection panel	77700905
Base plate	Replacement base plate with foam seal, Access: 6 x Ø 23 mm (+ Loop), outlet: 60 x Ø 13 mm, one base plate is included in the delivery of the WAVEPACE® Fiber-Cabinet-P2MP	on request



WAVEPACE® Fiber-Cabinet-P2MP
with mounted lightweight concrete plinth