

braun teleCom FWO-CS

Flush-mounted fiber optic outlet for the FTTH subscriber connection



24200602
FWO-CS-LC/APC-2

- Flush-mounted FTTH wall outlet for 4 LC ports
- Installation for a cavity wall box (60 mm mounting dimension)
- Fiber guiding element with splice protection holder for 4 crimp splice protectors
- Guiding contour in the fiber management areas
- Aesthetic appearance and stable design of the 2-part front cover, central plate with hinged adapter panels (dust protection)
- Conically shaped cable clamp for cables up to 3,2 mm diameter with snap-in clamp
- Pre-assembled adapters with single-port laser shutter
- Designed for pigtails with short boot
- Available versions: pre-assembled with adapters and/or pigtails as well as with in-house cable on roll-off carton

Parameter	FWO-CS-LC/APC-2	FWO-CS-LC/APC-2-2F	FWO-CS-xx-LC/APC-4F
Application	Splice/patch		Patch
Interfaces	2 x LC/APC duplex adapters with laser shutter	2 x LC/APC duplex adapters with laser shutter & 2 x pigtails with short boot	2 x LC/APC duplex adapters with laser shutter & 4 x LC/APC connectors attached to pre-installed cable (4 fibers)
Dimensions (L x W x D) [mm]	80 x 80 x 39		
Dimensions central plate [mm]	50 x 50 (DIN 49075)		
Mounting	Cavity wall/switch box (60 mm mounting dimension)		
Outlet material	Frame, central plate and fiber management element: plastic Support plate: aluminum-zinc alloy		
Color	Pure white, glossy surface		
Cable guiding	Cable feed from behind through the cavity wall box to the fiber guiding element		
Adapter quality	Adapter with zirconia sleeve and spring-loaded cover for laser protection (shutter)		
Connector quality	-	Grade B, level 1 classification acc. to DIN EN IEC 61753-1:2019-10 with zirconia ferrule	
Insertion loss IL [dB max.]	-	0,25	
Return loss RL [dB min.]	-	65	
Safety	The frame of the FWO-CS is secured with a concealed screw		
Special features	-	In-house cable Ø 2,65 mm with G.657.A2 fiber, fire protection class B2ca-s1a, d0, a1, for cable lengths see below 15 m on request 30 m on request 50 m on request	
Order No.	24200602	24200604	

Please note:

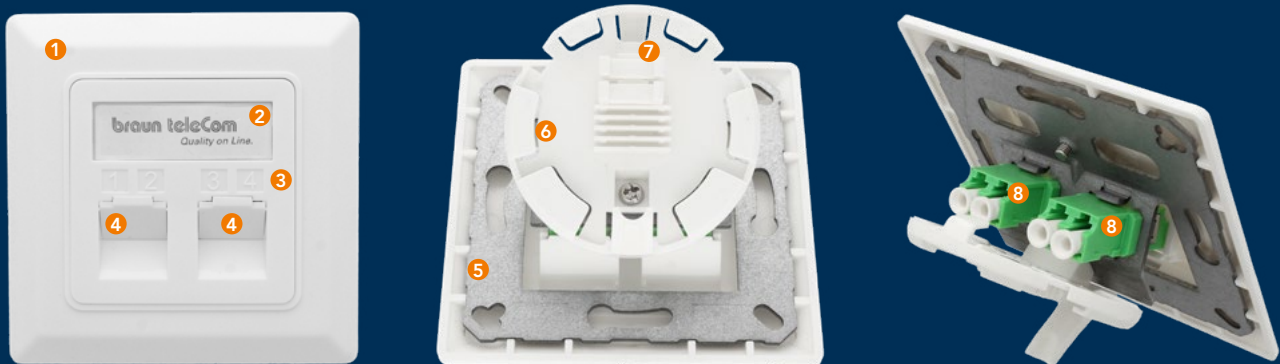
All adapters are also available with internal dust and laser shutters.

braun teleCom FWO-CS

Flush-mounted fiber optic outlet for the FTTH subscriber connection

Construction of the individual elements

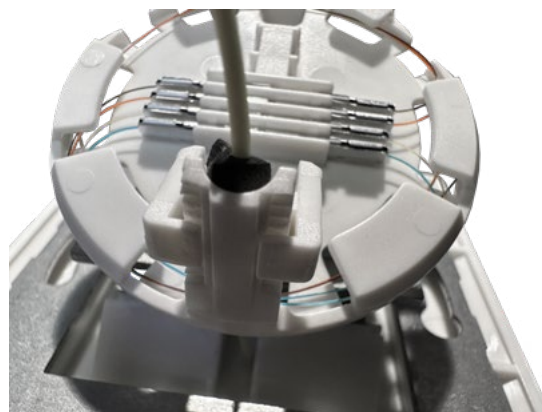
- 1 Frame
- 2 Screw cover and labeling field
- 3 Central plate
- 4 Dust covers
- 5 Support plate
- 6 Fiber management element, mounted
- 7 Cable clamps
- 8 LC/APC duplex adapter, mounted



Application examples FWO-CS



FWO-CS-LC/APC-2-2F
Pigtail routing



FWO-CS
Wired with micro cable and
4 crimp splice protectors



FWO-CS-LC/APC-2
Adapter access opened